

# Convert Model LT Pull Cable Head to Pneumatic Head

**ENSURE THAT THE SAFETY PIN IS INSTALLED IN THE EXISTING PULL CABLE HEAD PRIOR TO BEGINNING**

## **Remove the Model LT pull cable head**

Using a 1/8 inch punch, tap out the roll pin on the discharge head. It is located to the upper left of the pressure gauge. Drive it out from the gauge side of the head. Keep the pin.

Loosen set screw – almost all the way out - on the side on the discharge head.

Take the lanyard off from around the pressure gauge.

Twist and pull the top off of the discharge head.

## **Install the Model LT pneumatic head**

Note: You may have to lubricate the “O” ring on the discharge head for the following step. Any general purpose lubricant will do.

Twist and push the new pneumatic activation head onto the extinguisher discharge valve. It will snap into place.

Tap in the roll pin from the gauge side of the head – otherwise the head may loosen on the cylinder and cause a leak.

Tighten set screw.

Install the extinguisher in the vehicle.

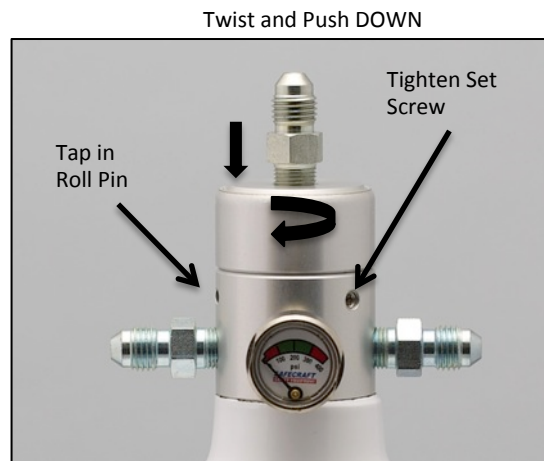
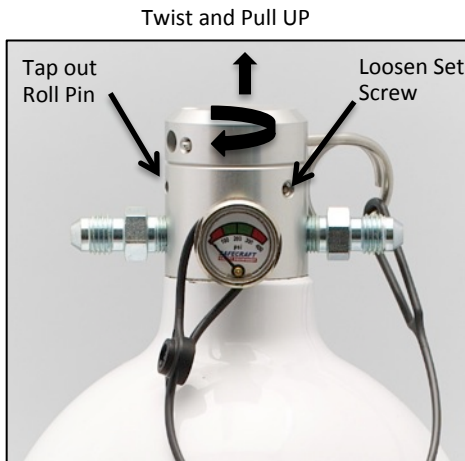
For suggested plumbing hookup, See Model LT Pneumatic System Hookup.



Model LT10



Model LT Pneumatic Head



Model LT Family

## **CALIFORNIA (HEADQUARTERS)**

5165-C Commercial Circle, Concord, CA 94520  
Phone: 800-400-2259 Fax: 925-405-0311  
email: [info@safecraft.com](mailto:info@safecraft.com)

## **NORTH CAROLINA (REPAIR FACILITY)**

5980 Grand National Lane, Concord, NC 28027  
Phone: 704-455-9422

NO WARRANTIES, EXPRESSED OR IMPLIED ARE MADE FOR THE SUITABILITY OF THIS PRODUCT FOR ANY PURPOSE. NO WARRANTY OR REPRESENTATION IS MADE AS TO THIS PRODUCTS ABILITY TO PROTECT THE USER FROM ANY INJURY OR DEATH. THE END USER MUST DETERMINE THE SUITABILITY OF THIS PRODUCT FOR THEIR APPLICATION.

**SAFECRAFT**  
SAFETY EQUIPMENT

Please Visit:

[www.safecraft.com](http://www.safecraft.com)

to learn more about our  
complete line of  
extinguisher systems